

2009-10 PROFILE



Carroll County

T E N N E S S E E

Atwood

Bruceston

Clarksburg

Hollow Rock

Huntingdon

McKenzie

McLemoresville

Trezevant

Carroll  County
CHAMBER OF COMMERCE



Zip Code Profiles

38220 Atwood

Zip 38220

Total Population	1,959
Total Households	833
Median Household Income	\$30,109
2009 Average Home Value	\$75,423

38317 Bruceton

Zip 38317

Total Population	2,683
Total Households	1,092
Median Household Income	\$32,193
2009 Average Home Value	\$60,114

38324 Clarksburg

Zip 38324

Total Population	277
Total Households	118
Median Household Income	\$31,250
2009 Average Home Value	\$71,600

38342 Hollow Rock

Zip 38342

Total Population	1,326
Total Households	536
Median Household Income	\$32,574
2009 Average Home Value	\$62,574

38344 Huntingdon

Zip 38344

Total Population	8,875
Total Households	3,536
Median Household Income	\$33,540
2009 Average Home Value	\$82,297

38201 McKenzie

Zip 38201

Total Population	9,922
Total Households	3,935
Median Household Income	\$35,602
2009 Average Home Value	\$87,874

38235 McLemoresville

Zip 38235

Total Population	306
Total Households	120
Median Household Income	\$38,214
2009 Average Home Value	\$82,857

38258 Trezevant

Zip 38258

Total Population	1,886
Total Households	784
Median Household Income	\$31,101
2009 Average Home Value	\$67,798

Location

Square Miles	599
Distance From:	
Jackson	35
Memphis	104
Nashville	103

Carroll Co. Airport

Swor Aviation:	731 352-7278
Manager:	Tommy Swor
Operator:	Swor Aviation
Attended:	Daylight Hours
Fuel:	100LL/Jet A
Repairs:	Major
Storage:	Hangar, Tie Down

Communications

13 Post Offices in Carroll County
Post Office Class: First

Source: 2009 Tennessee Press Association

Newspapers	Frequency	Circulation
Carroll County News Leader	Weekly	4,738
McKenzie Banner	Weekly	5,531
Jackson Sun	Daily	29,720

County Data 2009 Estimates

Population	28,890
Population Under 25	30.62%
Population Over 65	18.23%
Number Of Households	11,640
Average Household Size	2.38
Median Age	40.55
Median Housing Value	\$76,768
Median Household Income	\$33,892

Source: Claritas

Race

White	85.8%
African American	10.6%
Hispanic	1.6%
All Other	2.0%

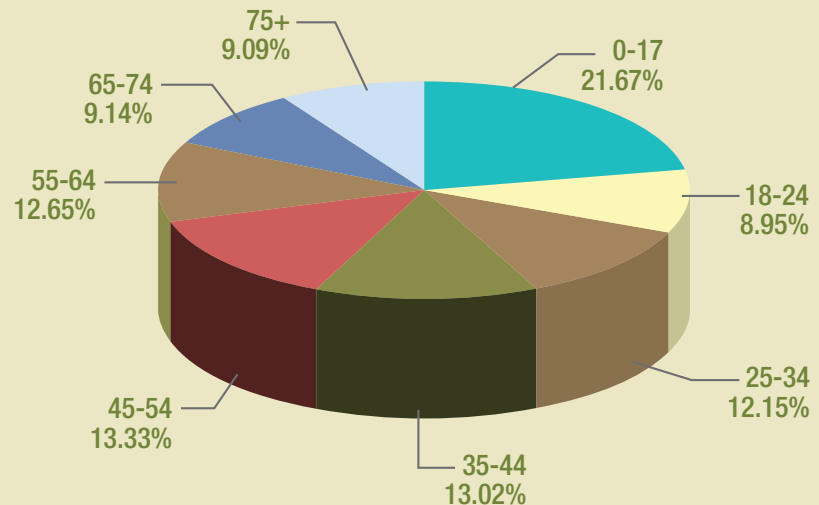
Finance

2008 Deposits Inside Market	\$417,506,000
Number Of Institutions	7
Number Of Offices	18

Bank of Gleason, Carroll Bank & Trust,
Citizens Bank & Trust, Farmers & Merchants,
FirstBank, McKenzie Banking Company,
& Regions Bank

Source: FDIC

Age Distribution



Source: U.S. Census Bureau

2008 Labor Force Summary

Year	Labor Force	Employment	Unemployment	Rate (%)
2008	13,850	12,610	1,240	8.9
2007	13,720	12,840	880	6.4
2006	13,910	13,030	880	6.3
2005	13,430	12,390	1,040	7.8
2004	13,850	12,720	1,130	8.2
2003	12,250	10,730	1,520	12.4
1998	12,970	11,870	1,100	8.5
1993	13,430	12,580	850	6.3
1988	12,000	11,010	990	8.3

Source: TN Department of Labor and Workforce Development

Distribution of Labor

Industry	2008 Employees
Natural Resources & Mining	34
Construction	202
Financial Activities	313
Leisure & Hospitality	456
Manufacturing	1,927
Wholesale Trade	271
Retail Trade	824
Transportation & Warehousing	65
Information	142
Education & Health Services	1,689
Professional & Business Services	638
Other Services	102
Government	1,447
All Industries	8,110

Annual Average Wages

Industry	2008
Natural Resources & Mining	\$35,827
Construction	\$37,500
Manufacturing	\$56,407
Wholesale Trade	\$38,090
Retail Trade	\$18,972
Transportation & Warehousing	\$21,549
Information	\$32,346
Financial Activities	\$36,064
Professional & Business Services	\$23,485
Education & Health Services	\$24,436
Leisure & Hospitality	\$8,951
Other Services	\$21,289
Government	\$29,186
All Industry	\$33,537

Source: TN Department of Labor and Workforce Development

Community Facilities

Healthcare

Hospitals (Beds: 135)	2
Clinics	11
Doctors	53
Chiropractors	1
Dentists	8
Optometrists	9
Nursing Homes	6

Libraries (Volumes: 10,650)	2
-----------------------------	---

Recreation

Parks	12
Golf Courses	1
Swimming Pools	2
Country Clubs	1
Theaters	1
Hotels & Motels (Rooms: 90)	2

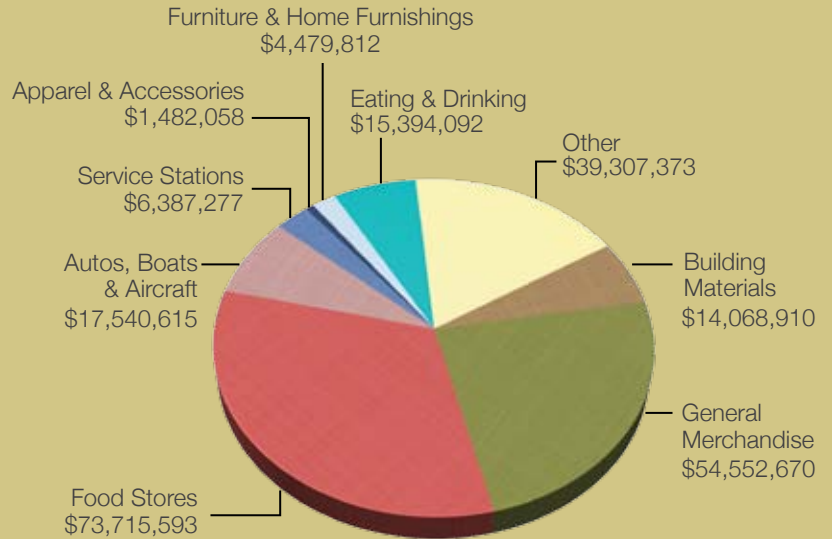
Largest Meeting Room Capacity	1,800
-------------------------------	-------

Parks within an hour's drive:

Carroll Lake, Natchez Trace State Park, Paris
Landing State Park, Reelfoot Lake, Kentucky Lake

Source: TN Department of Revenue

Retail Sales 2008



Population

	1990	2000
Carroll County	27,514	29,475
Atwood	1,066	1,000
Bruceston	1,586	1,554
Clarksburg	321	285
Hollow Rock	902	963
Huntingdon	4,180	4,349
McKenzie	5,168	5,295
McLemoresville	280	259
Trezevant	874	901

Source: U.S. Census Bureau

Major Employers

Norandal USA, Inc.	386
Bethel University	250
Baptist Healthcare	230
Republic Doors and Frames	221
State of Tennessee	166
McKenzie Regional Hospital	150
Behlen Country	144

Education 2008

School	Total Students	# Of Schools	Teachers	Student/Teacher Ratio	Central Office
Hollow Rock/					
Bruceton	710	2	51	1:13.9	586-7657
Huntingdon	1,242	3	96	1:12.9	986-2222
McKenzie	1,371	3	92	1:14.9	352-2246
South Carroll	390	1	34	1:11.5	986-4534
West Carroll	1,039	3	82	1:12.7	662-4200

Source: 2008 Report Card, TN Department of Education

Education State Industrial Training Service Available: Yes

	Schools
Public School Systems	13
Technology Centers	4*
Colleges & Graduate Schools	9*

*within an hours drive

Secondary Schools

Carroll County Technology Center
 Grades 9-12
 1235 Buena Vista Road
 Huntingdon, TN 38344
 731 986-4482

Post Secondary

Bethel University
 325 Cherry Street
 McKenzie, TN 38201
 731 352-4000

Tennessee Technology Center
 16940 Highland Drive
 McKenzie, TN 38201
 731 352-5364

Carroll County Adult Education
 191 Mebanewood Drive
 Huntingdon, TN 38344
 731 986-4841

Carroll County Commute Patterns

279	▲ 667	▼ 12	▲ 11	▼ 1,269	▲ 269	▼ 276	▲ 136	▼ 455	▲ 479	▼ 969	▲ 84	▼ 335	▲ 664
Benton	Decatur	Gibson	Henderson	Henry	Madison	Weakley							



2009 Estimated Travel Time To Work: 25.92 Minutes

Source: U.S. Census Bureau



P.O. Box 726
 20740 East Main Street
 Huntingdon, TN 38344
 731-986-4664
 cchamber@earthlink.net
 carrollcounty-tn-chamber.com



Carroll County Chamber of Commerce is centrally located in the county to serve all eight communities in Carroll County. Please call the Chamber Office, 731 986-4664, whenever we can be of assistance. Please visit our website at carrollcounty-tn-chamber.com or email us at cchamber@earthlink.net.